

SPACE<sup>®</sup>

 **QUICK**  
SHIP *By Space*



PREMIUM WORKSPACE  
DELIVERED AT SPEED.

## Engineered for Better Workspaces

For over a decade, SPACE has been designing and manufacturing high-performance workspaces for offices, institutions, and evolving business environments.

From a single executive cabin to large-scale workplace fit-outs, every solution is managed end-to-end under one roof – design, manufacturing, and installation.

Operating from a 3,20,000 sq. ft. facility powered by advanced German, Japanese, and Italian machinery, we deliver precision-built furniture with uncompromising quality and dependable timelines.



**100%**  
in-house process



**German, Japanese  
& Italian machinery**



**Design Studio**



**Experience Centres**



**10+ Years**  
of Expertise



**3,20,000 sq. ft.**  
Facility



## Quick Ship By Space

Not every workspace project can wait for long timelines and complex procurement cycles.

Quick Ship brings together SPACE's most in-demand workspace solutions in a ready-to-dispatch format – enabling faster execution without compromising on quality, functionality, or finish.

Built for businesses that need to move quickly, scale efficiently, and get operational without delays.

### How It Works

Choose from a curated range of pre-designed workspace solutions, and we'll handle the rest – manufacturing, dispatch, and delivery.

- No minimum order quantities
- No extended procurement cycles
- No unnecessary downtime

Just a faster, simpler way to build your workspace.



### Why It Works

- Delivery timelines starting from just 15 days
- Manufacturing capacity of 20,000 workstations per month
- Proven SPACE quality with accelerated execution

Ready to Ship. Ready to Perform.



# Sustainability & Certifications

## Built Responsibly. Certified Globally.

Our certifications represent more than compliance – they reflect our commitment to healthier interiors, responsible manufacturing, and future-ready workspaces.

Every product is designed to support environmental performance without compromising durability, aesthetics, or user well-being.



Trusted standards for durable performance



Cleaner interiors through low-emission standards



Backed by national benchmark for safety, reliability, & compliance



Transparent life-cycle environmental data



Lower-carbon pathways for future-ready operations



Supporting greener building outcomes



Responsible and traceable material sourcing



Environmental responsibility through structured systems



Energy discipline with long-term impact



Responsible and traceable material sourcing



# WORKSTATIONS

Designed for the way modern teams operate – focused work, collaboration, flexibility, and scale.

Our workstation systems combine ergonomic comfort, efficient planning, and clean aesthetics to create productive environments that evolve with your business.



## DESK BASED



### LINEAR WORKSTATION

L: 900 - 1800mm  
B: 600 - 750mm  
H: 900 - 1200mm



### L SHAPE WORKSTATION

L: 900 - 1800mm  
B: 600 - 750mm  
H: 900 - 1200mm



### 120° WORKSTATION

L: 900 - 1200mm  
B: 600 - 750mm  
H: 900 - 1200mm

## PANEL BASED



### LINEAR WORKSTATION

L: 900 - 1800mm  
B: 600 - 750mm  
H: 900 - 1800mm



### L SHAPE WORKSTATION

L: 900 - 1800mm  
B: 600 - 750mm  
H: 900 - 1800mm



### 120° WORKSTATION

L: 900 - 1800mm  
B: 600 - 750mm  
H: 900 - 1650mm

## HEIGHT ADJUSTMENT WORKSTATIONS (HAT)



### LINEAR WORKSTATION

L: 1050 - 2100mm  
B: 600 - 750mm  
H: 750 - 1250mm



### L SHAPE WORKSTATION

L: 1050 - 1800mm  
B: 600 - 750mm  
H: 700 - 1200mm



### 120° WORKSTATION

L: 1050 - 1800mm  
B: 600 - 750mm  
H: 700 - 1200mm

# CABIN TABLES

Executive spaces designed with clarity, functionality, and presence.

Clean lines, intelligent storage, and refined finishes come together to create workspaces that feel professional, purposeful, and built for leadership.



## CABIN TABLES



L: 1200mm onwards  
B: 600mm onwards  
H: 750mm



L: 1200mm onwards  
B: 600mm onwards  
H: 750mm



L: 1200mm onwards  
B: 600mm onwards  
H: 750mm

# STORAGE

Smart storage solutions that keep workplaces organised, efficient, and clutter-free.

From pedestal units to full-height storage systems, every solution is designed to maximise utility while maintaining a clean and cohesive workspace aesthetic.



## LOCKER UNITS



### METAL

L: 300mm onwards  
B: 300mm onwards  
H: 300mm



### PRELAM

L: 300mm onwards  
B: 300mm onwards  
H: 300mm

## PEDESTAL



### PEDESTAL UNIT - 3 DRAWERS

L: 450mm  
B: 450mm  
H: 650mm



### PEDESTAL UNIT - 3 DRAWERS

L: 450mm  
B: 450mm  
H: 650mm



### PEDESTAL UNIT - 3 DRAWERS

L: 450mm  
B: 450mm  
H: 650mm



## LOW HEIGHT

L: 1200mm onwards  
B: 450mm onwards  
H: 750mm



## MEDIUM HEIGHT

L: 1200mm onwards  
B: 450mm onwards  
H: 1200mm



## FULL HEIGHT

L: 1200mm onwards  
B: 450mm onwards  
H: 2400mm

# MEETING ROOM TABLES

Built for conversations that move business forward.

From quick team discussions to formal presentations, our meeting tables are designed for collaboration, durability, and a seamless professional experience.



## MEETING TABLES



L: 1200mm onwards  
B: 750mm onwards  
H: 750mm



L: 1200mm onwards  
B: 750mm onwards  
H: 750mm



# HIGH TABLES

Designed for agile collaboration and informal interactions.

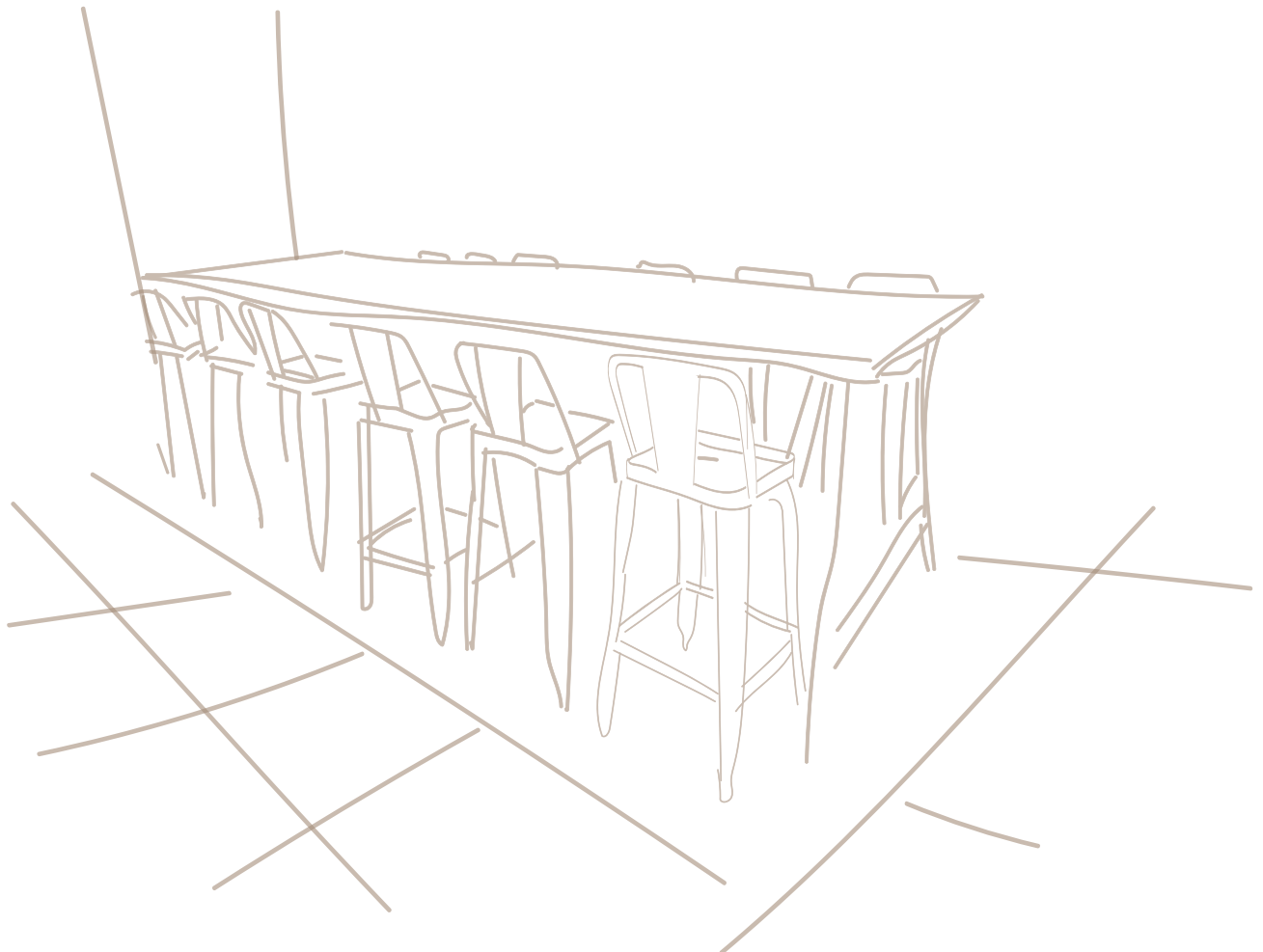
Our high tables create dynamic spaces for quick discussions, stand-up meetings, and collaborative engagement in modern workplaces.



## HIGH TABLES



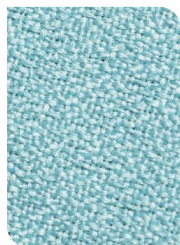
L: 1500mm  
B: 900mm  
H: 1050mm



# FABRICS



BABY BLUE



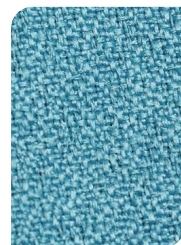
SPEARMINT



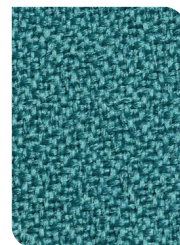
LIME



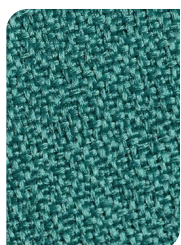
PEPPERMINT



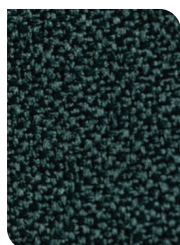
WATERFALL



AMARILLO



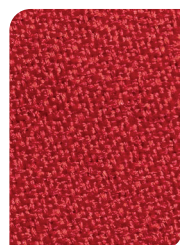
BRUMBLE



FORESH



MINK



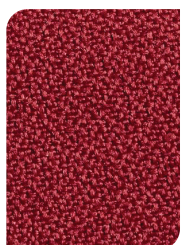
FLAME



GRANADA



ACORN



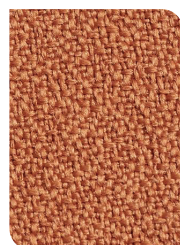
APOLLO



CARAMEL



BLACK



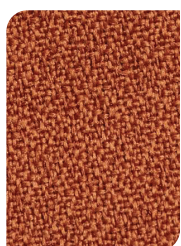
SALMON



BROWN



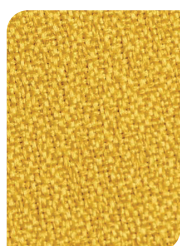
SANGRIA



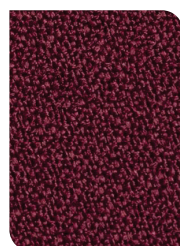
BURNT ORANGE



PLANET



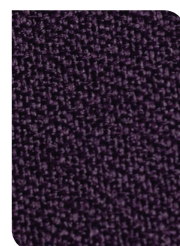
LEMON



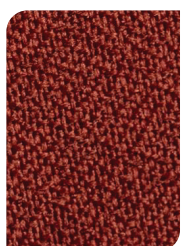
RUBY



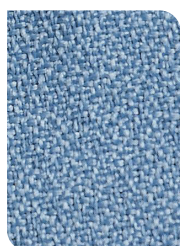
MOCCA



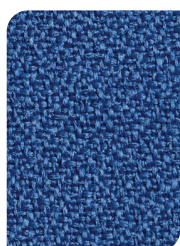
MAGENTA



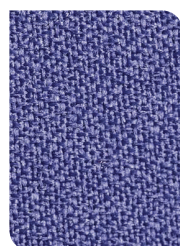
CINNAMON



DOLPHIN

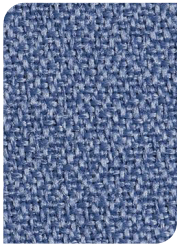


ELECTRIC

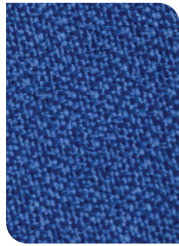


CHINA SEA

## FABRICS



CORN FLOWER



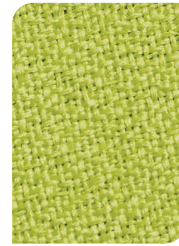
AZURE



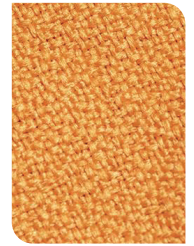
INDIGO



FERN



DAGO GREEN



DAGO ORANGE



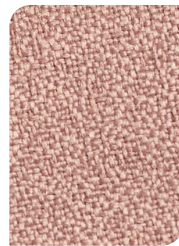
AMETHYST



PEARL



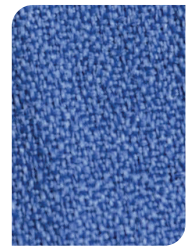
CLOUDS



PEACH



SHIMMER



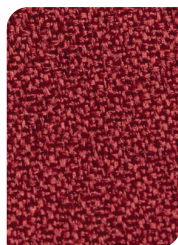
MED BLUE



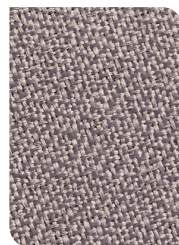
MED GREY



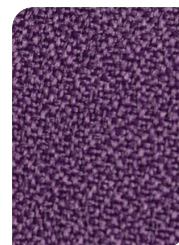
GUNGREY



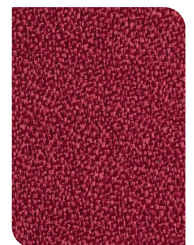
WINE



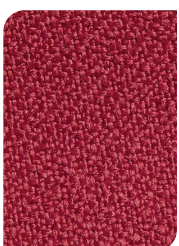
ACID



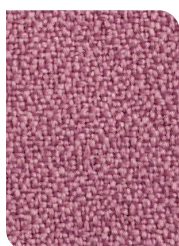
PURPLE



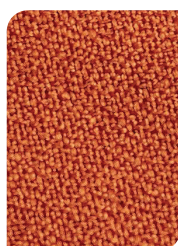
RASPBERRY



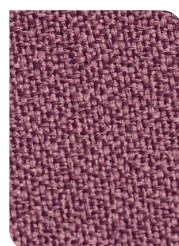
BLUSH



PINK



TANGERINE



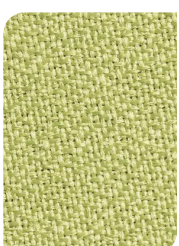
LAVENDER



GREYSTO



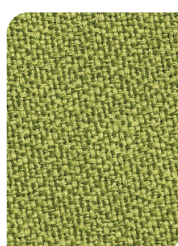
STONE



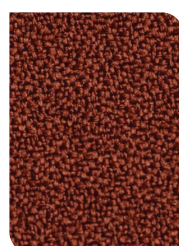
GREEN



SNOWWHITE

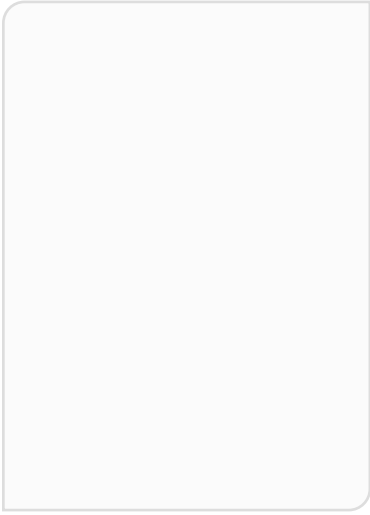


OLIVE

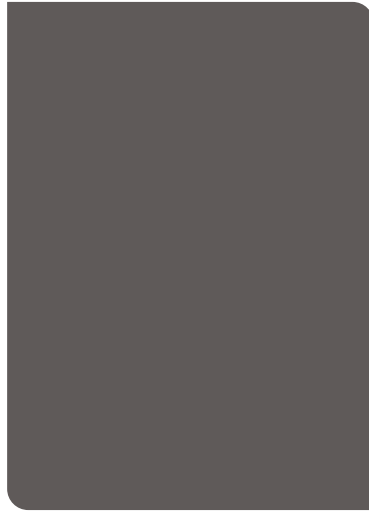


D RUST

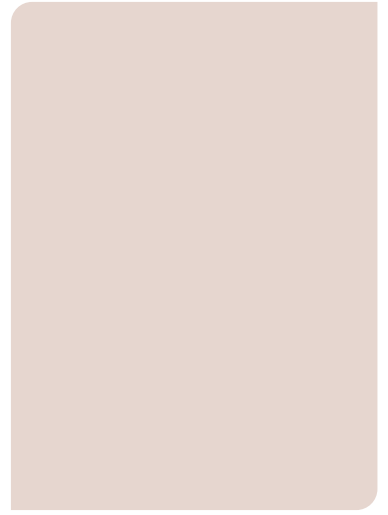
## COLOURS (PRELAM)



FROSTY WHITE



SLATE GREY



CERAMIC GREY



THANSAU MAPLE



THAI TEAK



PURE OAK

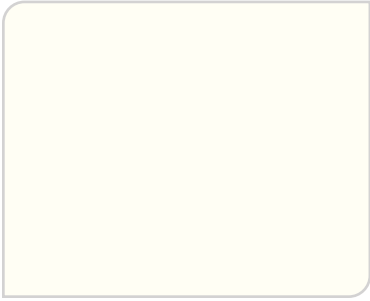


SAHARA WALNUT



MOULDER A CLASSIC

## COLOURS (POWDER COATING)



11-P-22-009  
WHITE



11-21-094  
GREY



11-25-005  
GRAPHITE BLACK



11-23-068  
GRAPHITE GREY



11-26-G-013  
METALLIC SILVER - GLOSSY

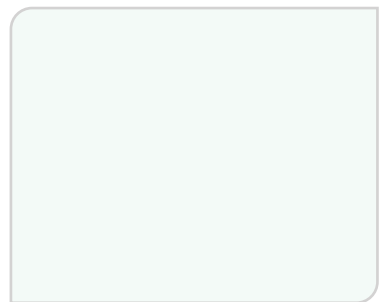
## COLOURS (GLASS)



MGC SUNNY ORANGE



MGC SOLAR YELLOW



MGC SUPER WHITE



MGC EURO BRONZE



MGC AZURE BLUE

# SPACE<sup>®</sup>

Great  
Place  
To  
Work<sup>®</sup>

Certified  
NOV 2025–NOV 2026  
INDIA

## VISIT OUR EXPERIENCE CENTRES IN INDIA

### CORPORATE OFFICE & FACTORY

Space Management Systems India Pvt. Ltd.  
Sy. No. 14/2, Bilwardahalli Village,  
Gottigere, Jigani Hobli, Anekal (TK),  
Bengaluru - 560 083

### EXPERIENCE CENTRE

**BENGALURU:** CEARS PLAZA, 1<sup>st</sup> Floor,  
Residency Road,  
Bengaluru - 560 025

**CHENNAI:** 2/19 Railway Colony 1<sup>st</sup>  
Street, Kurian Complex  
1<sup>st</sup> Floor, Nelson Manickam Road,  
Chennai - 600 029

**HYDERABAD:** 4<sup>th</sup> Floor, 24, Karat Entertainment,  
Sai Vaibhav Layout, Sai Aishwarya  
Layout, Chitrapuri Colony,  
Manikonda, Hyderabad,  
Telangana - 500 104